

PANEL-PC-17-3-A Quick Installation Guide

SKU: SA-PanelPC-173-00-00

Address of the manufacturer:

SALZ Automation GmbH
Bad Salzuffen, Germany
Email: support@salz-automation.com
Please scan for more information:



1. Overview

Panel-PC-17-3-A is a 17.3" industrial panel pc with a capacitive 16:9 TFT LCD touchscreen, Full HD- 1920 x 1080 pixels and pre-installed Automation Browser. Power Supply 24V DC.

2. Package Checklist

- Panel-PC-17-3-A x 1
- Mounting Brackets
- User Manual
- Quick Installation Guide



3. Port Information

- Two power input possibilities: 2-pin terminal: 12-36V DC, and a coaxial power connector, 24V
- 1*SIM card slot
 - 2* USB 3.0
 - 1*TF/SD card slot
 - 1*HDMI
 - 1*RJ-45 network interface
 - 1*3.5mm Audio output interface
 - 2*com (Serial port)

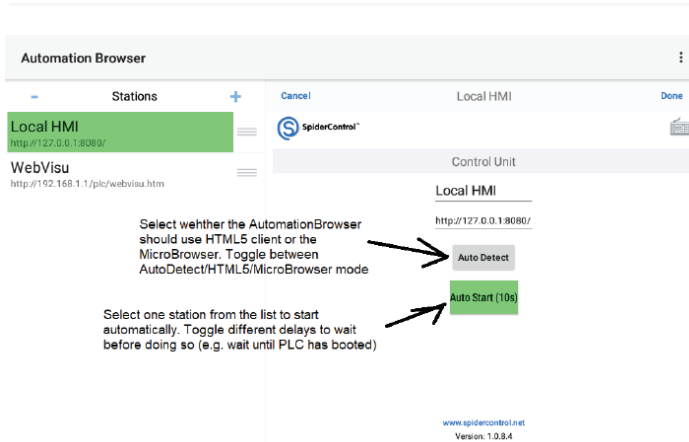
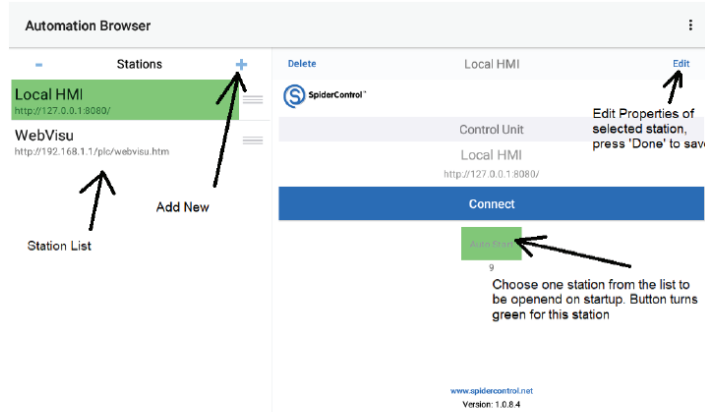
4. AutomationBrowser

AutomationBrowser is the default window/homescreen for the panel PC.

INSTALLATION Steps:

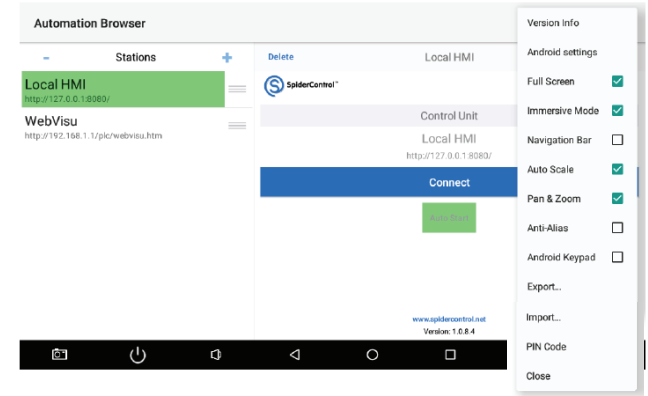
Step 1: Power up the PANEL PC with appropriate power source (Two power input possibilities: 2-pin terminal: 12-36V DC, and a coaxial power connector, 24V)

Step 2: The home screen is the AutomationBrowser:



Step 3: Add your custom stations (using IP addresses) and follow the instructions on the screen.

Step 4: Explore the Main Menu (Upper Right 3 Dots)



| | |
|-------------------|--|
| Android Settings: | Enter Android Settings to modify IP Address and other network related parameters. This is useful when the AutomationBrowser is in Home Screen mode and the user has no access to other Apps. |
| Full-screen: | Remove the status bar in the top of the screen. |
| Immersive-Mode: | Remove both status bar and the task bar in the bottom of the screen (restore task bar with a swipe up from the bottom of the screen) |
| Navigation Bar: | This is only used in HTML 5 mode to show a control bar in the top of the screen, to navigate with previous and next buttons, to refresh the view or to come back in the home view |
| Auto-Scale: | Automatically de re-scaled to fit thescreen (isotropic, keep width/height ratio) |
| Pan & Zoom: | Enable/disable panning and zooming of the view. |
| Anti-Alias: | Improve the rendering with anti-alias if the device doesnot already support this feature in hardware accelerator. In most devices we don't need to activate this option. |
| Android Keypad: | Either show the Android Keypad to edit a value or usethe Keypad/alpha-pad TEQ files |
| Export: | Export station list in the into the Download/AutomationBrowser/M-B_STATION.xml |

| | |
|-----------|--|
| Import: | Import station list from Download/AutomationBrowser/M-B_STATION.xml |
| PIN Code: | PIN code is used to prevent any modification from operator user. The password is needed to change anything. This feature allows for locking up the operator panel to avoid a user to modify settings or to exit the App ('Kiosk Mode') |
| Close: | Close the menu. |

The OEM licence for the PANEL PC is in the directory:
Internal Storage/Downloads/.....

Product Link: [Panel-PC-17-3-A](#)

If the equipment is used in a manner not specified by SALZ Automation, the protection provided by the equipment may be impaired.